

# WESSLING Consulting (Shanghai) Ltd.

Analysis | Consultancy | Planning | since 1983



WESSLING is a laboratory testing and consulting company with a broad range of services. Our headquarter is located in Altenberge near Münster, Germany. The enterprise is 100% in family-owned and has a workforce of 1,400 employees in 9 countries. We are in Shanghai since 2011 and responsible for the Chinese market with the focus on the following topics:

## Environment, Health & Safety

- Sample taking, testing and consulting for:  
Emissions, Air, Water, Soil, Waste, Biogas, Microplastics
- Environmental Audits
- Environmental, Health & Safety Due Diligence for:  
Merger & Acquisition projects, Real Estate transactions
- Environmental Site Assessments and soil testing for:  
land purchase, factory relocations and new building projects
- Building Health check, Indoor Air Quality, VOC & Asbestos test for:  
Renovation and new construction of Offices, Schools, Workshops

## International Product Quality, Safety and Compliance

- Food & Beverage, Pet Food, Cosmetics, Pharma, Natural Products
  - ✓ Finished Products, Raw Materials & Ingredients
- Down & Feathers, Consumer products, Toys

For importing to China from Europe:

- Consulting, Compliance check, Label check and translation
- Sample handling and lab testing in China / import analytics
- Expert opinions for damage claims, photo documentation
- Manufacturer Audits in Europe

For sourcing from China

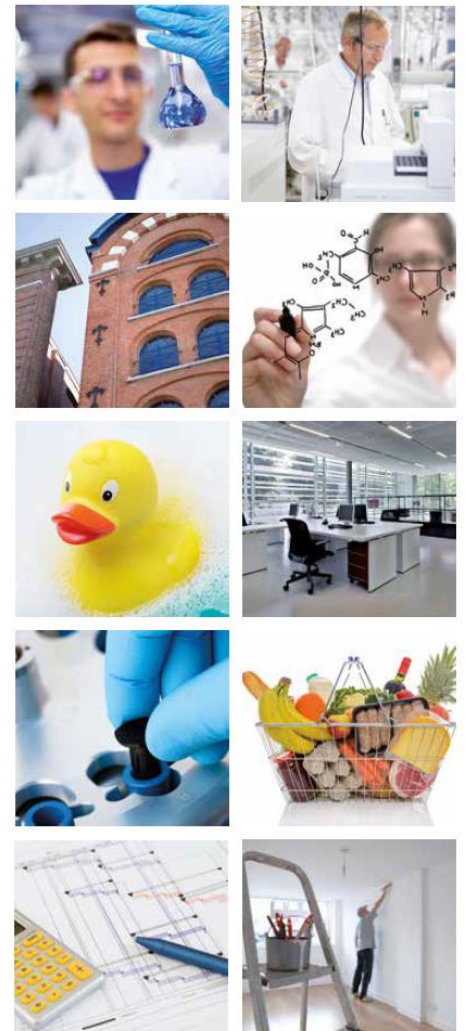
- Pre-shipment inspections, sampling
- Sample handling and lab testing in Germany
- Quality assurance, problem solving & consulting
- Manufacturer training and Audits in China

### Our office address:

103 Cao Bao Road, Building 1, Office 1203  
200233 Shanghai, Xuhui District  
P.R. China

### Inquiries:

+86 (0) 21 337 253 67  
[contact@wessling.cn](mailto:contact@wessling.cn)  
[www.wessling.de](http://www.wessling.de)



Dr. Michael Jahnz, General Manager